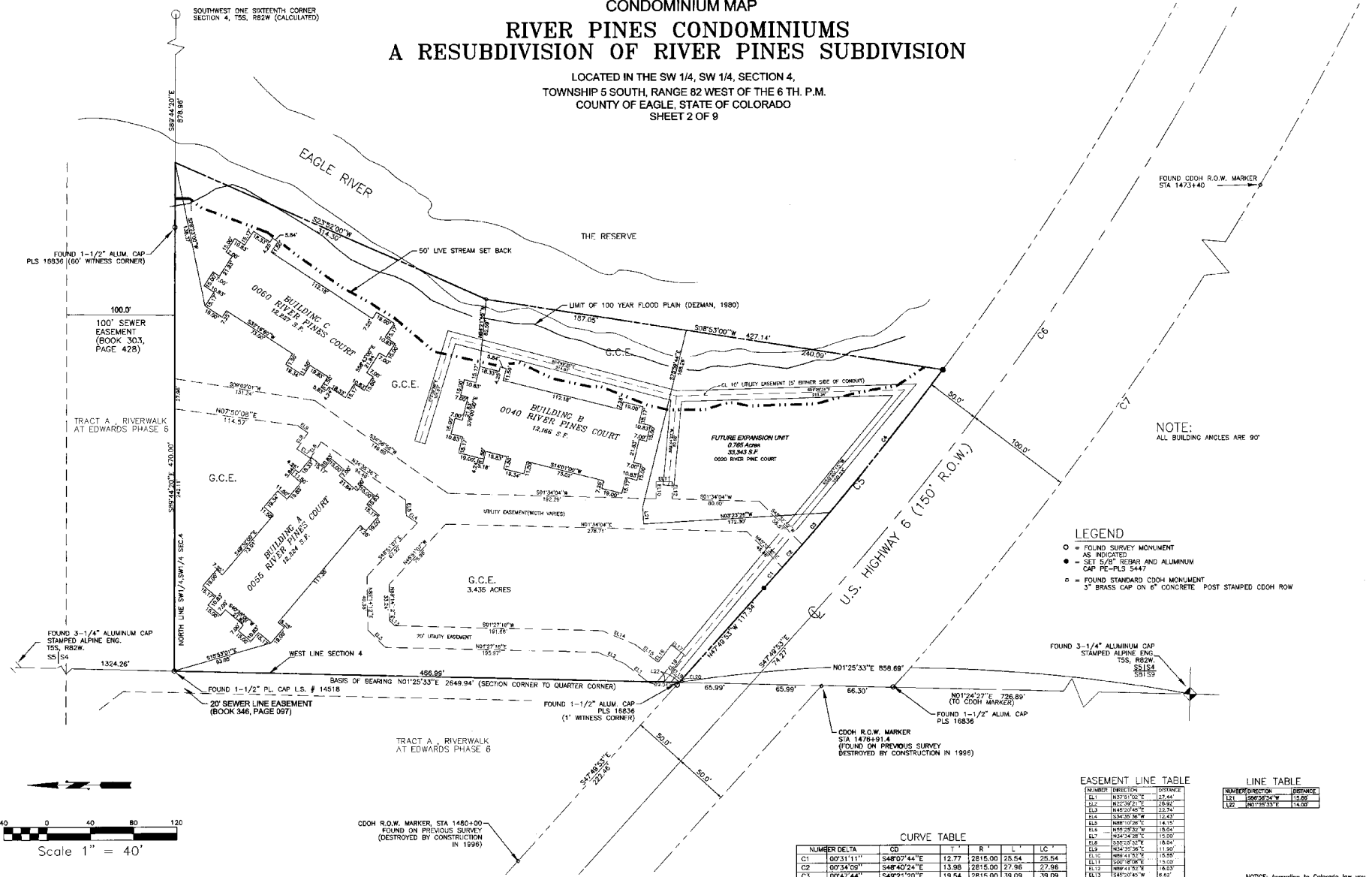


CONDOMINIUM MAP RIVER PINES CONDOMINIUMS A RESUBDIVISION OF RIVER PINES SUBDIVISION

LOCATED IN THE SW 1/4, SW 1/4, SECTION 4,
TOWNSHIP 5 SOUTH, RANGE 82 WEST OF THE 6 TH. P.M.
COUNTY OF EAGLE, STATE OF COLORADO
SHEET 2 OF 9



NOTE:
ALL BUILDING ANGLES ARE 90°

- LEGEND**
- = FOUND SURVEY MONUMENT AS INDICATED
 - = SET 5/8" REBAR AND ALUMINUM CAP PE-PLS 5447
 - ⊙ = FOUND STANDARD CDCH MONUMENT 3" BRASS CAP ON 6" CONCRETE POST STAMPED CDCH ROW

EASEMENT LINE TABLE

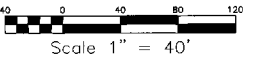
NUMBER	DIRECTION	DISTANCE
EL1	N67°11'02"E	22.44'
EL2	N62°30'21"E	25.82'
EL3	N49°52'48"E	22.74'
EL4	S54°02'36"W	15.43'
EL5	N08°12'28"E	14.15'
EL6	N05°02'32"W	18.04'
EL7	N04°14'28"E	12.50'
EL8	N04°35'36"E	11.90'
EL9	N04°35'36"E	11.90'
EL10	N04°35'36"E	11.90'
EL11	N00°48'08"E	15.09'
EL12	N00°41'50"E	14.03'
EL13	S10°10'45"W	8.00'
EL14	S32°30'21"W	33.37'
EL15	S37°10'21"W	25.92'
EL16	S52°22'56"E	27.77'
EL17	S37°30'01"W	25.00'
EL18	S32°12'59"E	2.83'
EL19	N07°10'52"E	13.82'
EL20	N47°42'52"W	2.67'

LINE TABLE

NUMBER	DIRECTION	DISTANCE
L11	S08°30'24"W	15.80'
L12	N07°02'52"E	15.00'

CURVE TABLE

NUMBER	DELTA	CD	T	R	L	LC
C1	00°31'11"	S48°07'44"E	12.77	2815.00	25.54	25.54
C2	00°34'02"	S48°40'24"E	13.08	2815.00	27.96	27.96
C3	00°47'44"	S49°21'20"E	19.54	2815.00	58.09	39.09
C4	03°25'52"	S51°28'08"E	84.31	2815.00	188.57	168.55
C5	09°18'58"	S50°31'36"E	130.87	2815.00	281.18	281.08
C6	34°09'00"	S54°54'23"E	880.02	2865.00	1700.63	1682.16
C7	25°13'29"	S50°44'11"E	663.43	2965.00	1305.36	1294.84

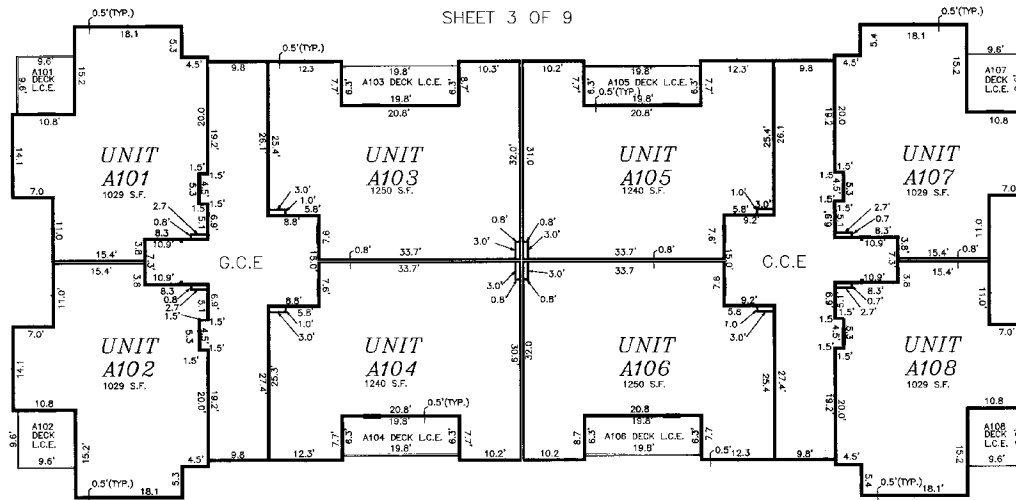


Contra Engineering, Inc.
 Consulting Engineers & Land Surveyors
 P.O. Box 8716 • 618 S. Beaver Creek Drive, Suite 102
 Avon, Colorado 81620
 PH: 866-8160 FAX: 866-8763

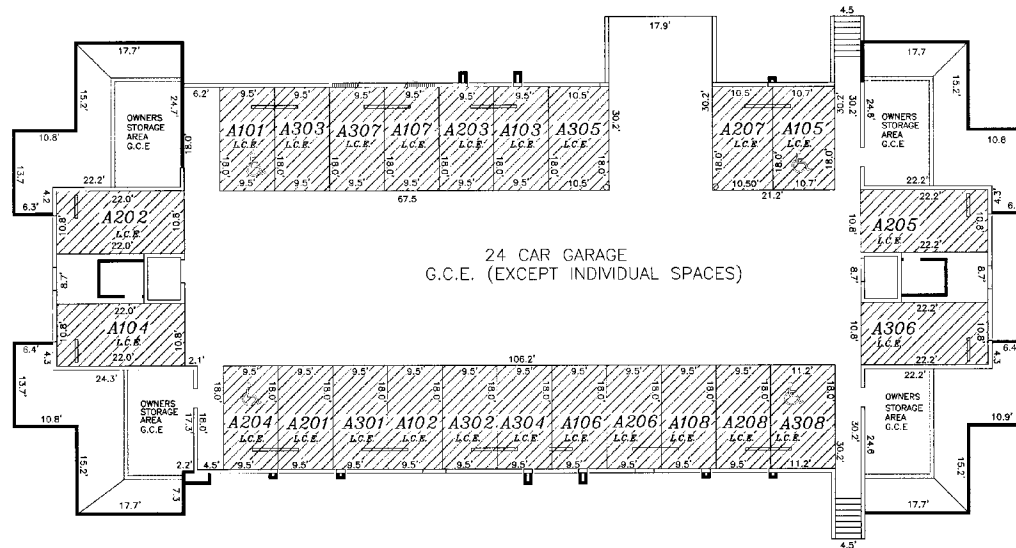
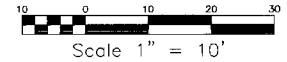
NOTICE: According to Colorado law you must commence any legal action based upon any defect in this survey within three years after you first discovered such defect. In no event, may any action based upon any defect in this survey be commenced more than ten years from the date of the certification shown hereon.

CONDOMINIUM MAP RIVER PINES CONDOMINIUMS A RESUBDIVISION OF RIVER PINES SUBDIVISION

SHEET 3 OF 9



BUILDING A
0055 RIVER PINES COURT
FIRST FLOOR



BUILDING A
0055 RIVER PINES COURT
GARAGE FLOOR

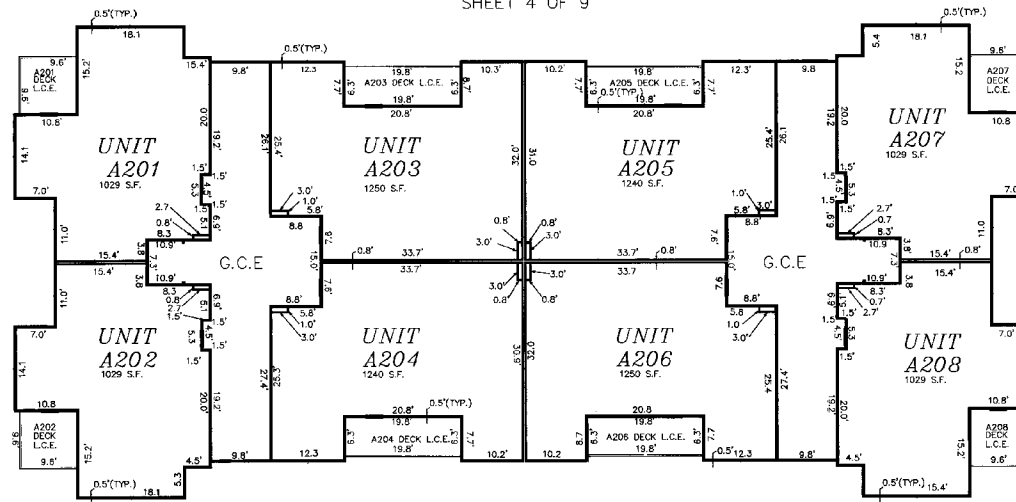


Contra Engineering, Inc.

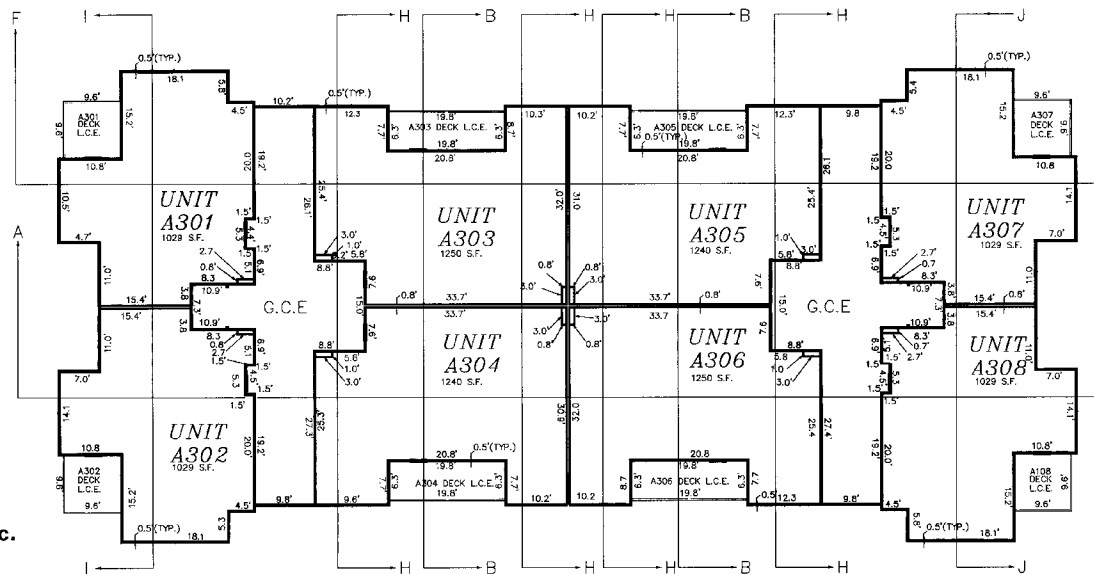
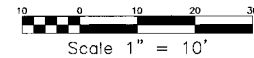
Consulting Engineers + Land Surveyors
P.O. Box 3718 - 48 E. Beaver Creek Blvd., Suite #102
Aven, Colorado 81602
PH: 940-0182 FAX: 940-0183

CONDOMINIUM MAP RIVER PINES CONDOMINIUMS A RESUBDIVISION OF RIVER PINES

SHEET 4 OF 9



BUILDING A
0055 RIVER PINES COURT
2ND FLOOR



BUILDING A
0055 RIVER PINES COURT
3RD FLOOR

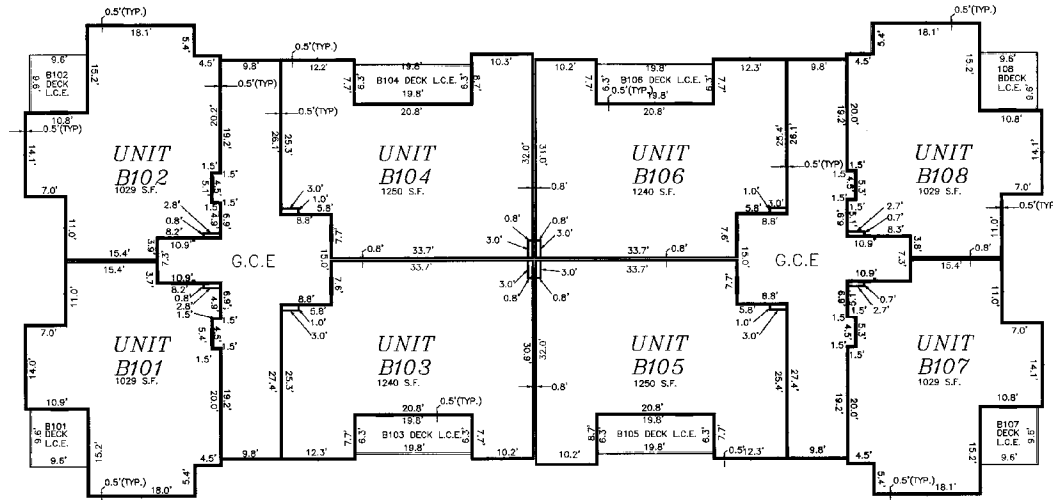


Contra Engineering, Inc.

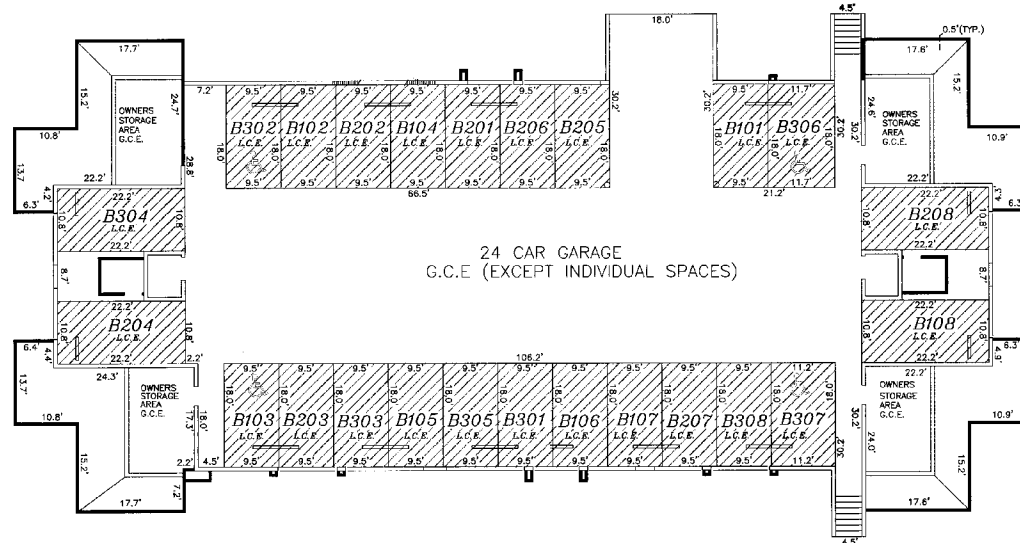
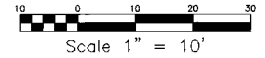
Consulting Engineers + Land Surveyors
P.O. Box 3710 - 48 E. Beaver Creek Blvd., Suite #102
Aven, Colorado 81602
TEL 940-2155 FAX 943-9743

CONDOMINIUM MAP RIVER PINES CONDOMINIUMS A RESUBDIVISION OF RIVER PINES SUBDIVISION

SHEET 5 OF 9



BUILDING B
0040 RIVER PINES COURT
FIRST FLOOR



BUILDING B
0040 RIVER PINES COURT
GARAGE FLOOR

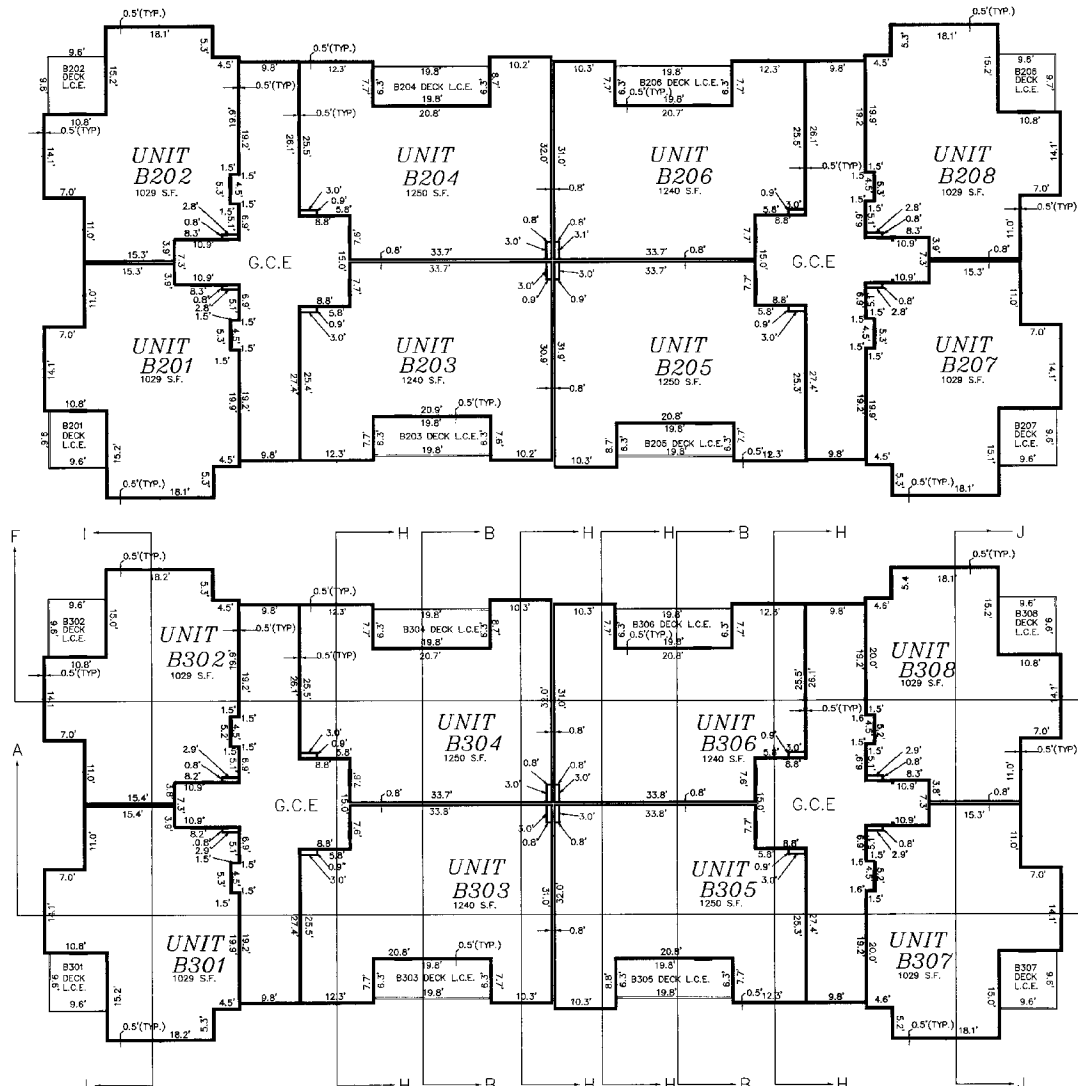


Contra Engineering, Inc.

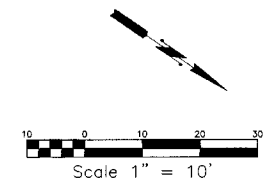
Consulting Engineers & Land Surveyors
P.O. Box 3779 • 46 E. Beaver Creek Blvd., Suite #102
Aven, Colorado 81620
PH 948-9225 FAX 948-6783

CONDOMINIUM MAP RIVER PINES CONDOMINIUMS A RESUBDIVISION OF RIVER PINES SUBDIVISION

SHEET 6 OF 9



BUILDING B
0040 RIVER PINES COURT
2ND FLOOR



BUILDING B
0040 RIVER PINES COURT
3RD FLOOR

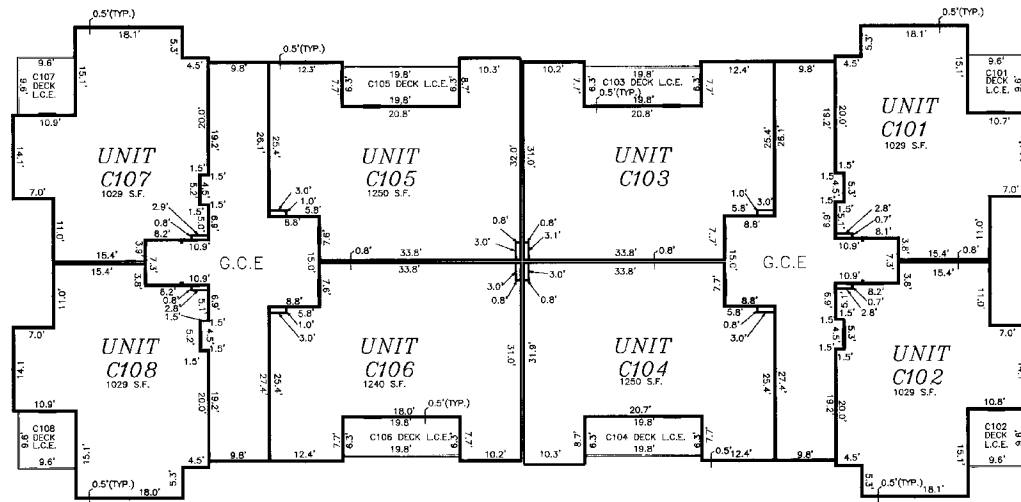
Contra Engineering, Inc.
Consulting Engineers + Land Surveyors
P.O. Box 3792 - 48 E. Beaver Creek Blvd., Suite #102
Aspen, Colorado 81602
PH 940-0000 FAX 940-9763

1. V:\00160\CONDOMINIUMS\00160.DWG, Thu, 01/11/00, 15:47:1999, G.E.F.

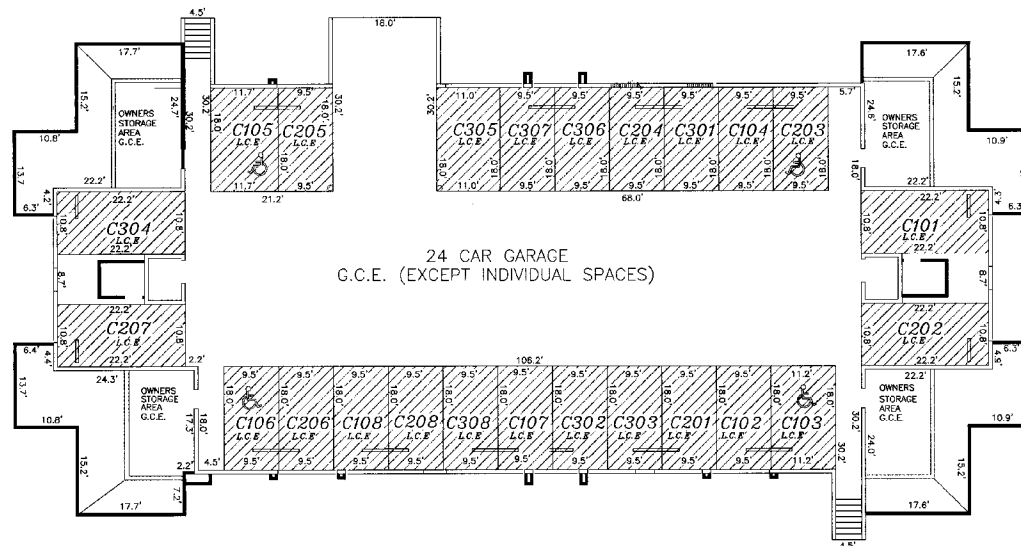
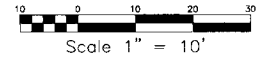
R-179 6/9

CONDOMINIUM MAP RIVER PINES CONDOMINIUMS A RESUBDIVISION OF RIVER PINES SUBDIVISION

SHEET 7 OF 9



BUILDING C
0060 RIVER PINES COURT
FIRST FLOOR



24 CAR GARAGE
G.C.E. (EXCEPT INDIVIDUAL SPACES)

BUILDING C
0060 RIVER PINES COURT
GARAGE FLOOR

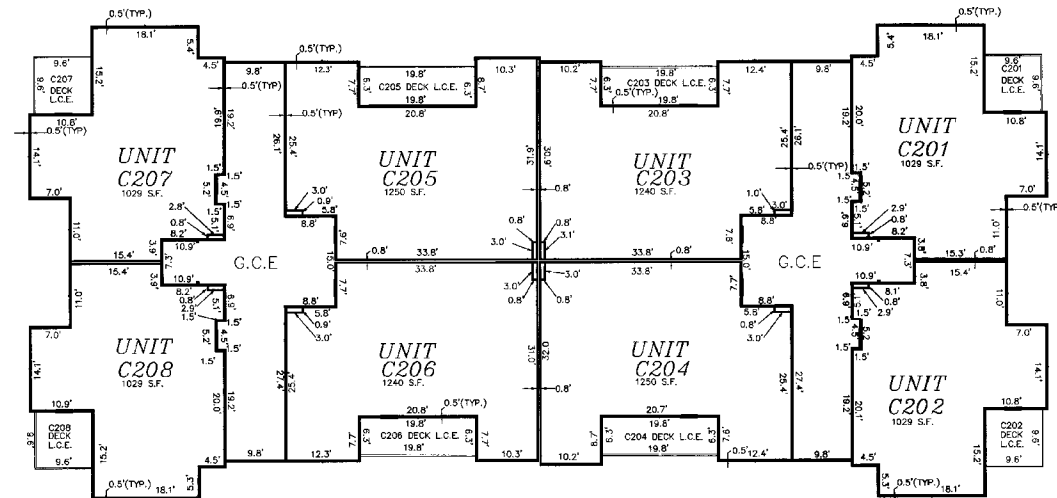


Contra Engineering, Inc.

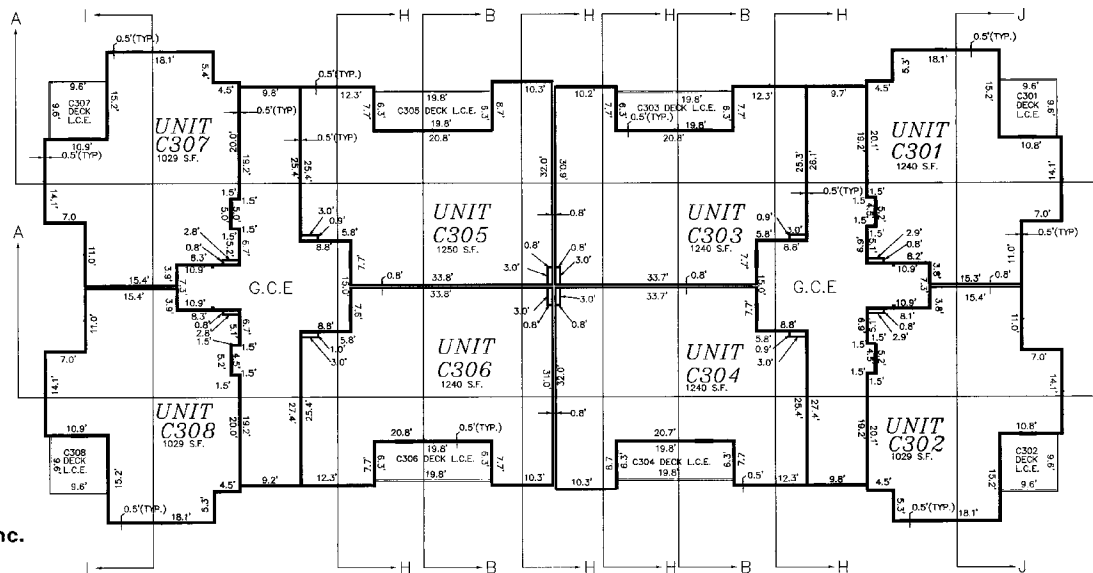
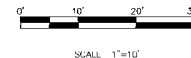
Consulting Engineers & Land Surveyors
P.O. Box 3718 - 48 E. Beaver Creek Blvd., Suite #102
Avon, Colorado 81620
PH: 848-0125 FAX: 848-9783

CONDOMINIUM MAP RIVER PINES CONDOMINIUMS A RESUBDIVISION OF RIVER PINES

SHEET 8 OF 9



BUILDING C
0060 RIVER PINES COURT
2ND FLOOR



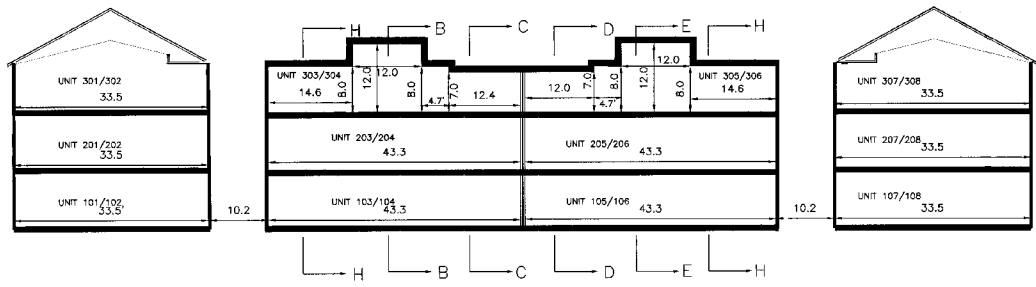
BUILDING C
0060 RIVER PINES COURT
3RD FLOOR



Contra Engineering, Inc.
 Consulting Engineers • Land Surveyors
 P.O. Box 3719 • 46 E. Beaver Creek Blvd., Suite #102
 Avon, Colorado 80620
 PH 303-975-0155 FAX 303-975-0182

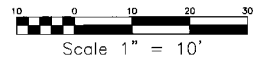
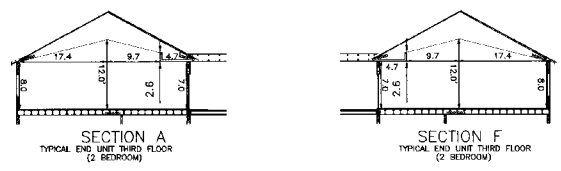
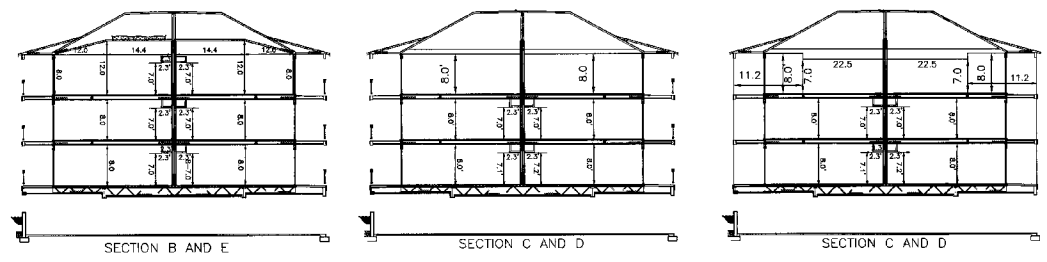
CONDOMINIUM MAP RIVER PINES CONDOMINIUMS A RESUBDIVISION OF RIVER PINES SUBDIVISION

SHEET 9 OF 9



FINISH FLOOR ELEVATIONS

- BUILDING A**
 GARAGE FLOOR ELEV. = 7219.0'
 101 THROUGH 108 ELEV. = 7229.1'
 201 THROUGH 208 ELEV. = 7238.2'
 303 THROUGH 308 ELEV. = 7247.5'
- BUILDING B**
 GARAGE FLOOR ELEV. = 7227.7'
 101 THROUGH 108 ELEV. = 7237.6'
 201 THROUGH 208 ELEV. = 7246.8'
 301 THROUGH 308 ELEV. = 7256.0'
- BUILDING C**
 GARAGE FLOOR ELEV. = 7219.2'
 101 THROUGH 108 ELEV. = 7229.1'
 201 THROUGH 208 ELEV. = 7238.3'
 301 THROUGH 308 ELEV. = 7247.5'



Contra Engineering, Inc.
 Consulting Engineers & Land Surveyors
 P.O. Box 9790 - 28th St. South Omaha, Nebraska, 68131
 Omaha, Nebraska 68131
 PH 402-933 FAX 402-978

R-179 9/9

K:\EXPORT\51061818\CONDOMINIUM.MXD Thu Feb 08 09:18:41 2007 6:1